

**stem**

# Superior end-to-end delivery across 55 countries

Stem Project Delivery flier



## Delivery Performance

100%

Remediation rate

0

Dead on arrival incidents

95%

First time FAT success

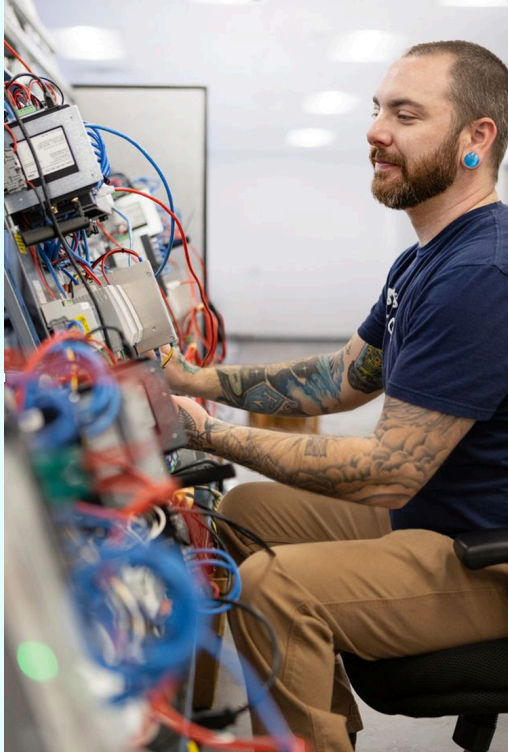
99%

On-time ship rate



# Production & Assembly Meet Rigorous Quality Assurance Standards

Stem's Longmont, Colorado, production facility assembles, configures, and tests enclosures before shipping.



## ISO 9001 Certified and ETL certified to UL 508A

Every enclosure is built under a certified quality management system, meaning standardized processes, documented procedures, and consistent output.

## Success at Scale

Our production team handles 2,800+ sites annually, so has the volume and rhythm to handle large portfolios without sacrificing quality or schedule. Your project moves through a proven process.

## Decades of Experience

Nearly two decades of builds means we've seen every edge case. The lessons from 200,000 deployments are baked into how we build yours.

## Outstanding Quality

95% of all enclosures pass Factory Acceptance Testing on the first attempt — resulting in less rework, fewer delays, and a clean path to your site installation date.

**2,800+**

Sites deployed annually

**200,000+**

Total deployments



Stem's quality management system (QMS) is ISO 9001:2015 is certified by Platinum Registration, Inc. The certification is for assembly and testing of hardware for configured end-to-end distributed energy monitoring, management, and control product solutions and ensures that these solutions consistently meet customer and regulatory requirements.



Intertek, a global leader in testing, inspecting, and certification to ensure quality and safety, is responsible for confirming the UL 508A certification of our industrial control panels. This third-party certification on our industrial control panel confirms that our panels comply with nationally recognized safety standards and provides guarantee of safe performance. This means that our electrical control panels are compliant with national and local electrical codes. Additionally, it ensures that our industrial control panels contain only recognized and listed components and ensures the quality and integrity of our outdoor enclosures.



Unless otherwise noted in product descriptions, all core hardware offered by Stem is selected for the highest demonstrated field reliability. Confirming our high-quality standards, Stem offers limited 5-year warranties on our core products to its end users.

# Stem's Superior Delivery Process

From initial design through commercial operation, our end-to-end delivery model eliminates multi-vendor complexity and gets you to Commercial Operation Date (COD) faster.

<b>Technical Sales Engineering</b>	60% of design complete before you sign, minimizing change orders.	<b>01</b>
<b>Project Initiation</b>	Dedicated project manager, locked scope, parallel design workstreams from day one.	<b>02</b>
<b>Design &amp; Engineering</b>	Hardware and software milestones delivered before production begins.	<b>03</b>
<b>Production &amp; Assembly</b>	ISO 9001-certified and ETL listed to UL 508A facility, 99% on-time ship rate.	<b>04</b>
<b>Factory Acceptance Testing</b>	Engineers conduct functional checkout of panels, network topology, and firmware version before anything ships to site.	<b>05</b>
<b>Commissioning</b>	Remote or onsite commissioning. Cold and hot SCADA commissioning plus utility witness testing.	<b>06</b>
<b>Site Configuration &amp; Reporting</b>	Remote data visualization from day one. Site is integrated with Stem's PowerTrack platform and provides automated regulatory reporting from day of COD.	<b>07</b>
<b>Agency Reporting</b>	Automated third-party compliance reporting configured during commissioning. Production data is formatted and submitted to interconnection authorities, state incentive programs, and offtake counterparties from day one of commercial operation.	<b>08</b>
<b>Support</b>	Tiered support from first-call triage through engineering support. Your site is backed by Stem's multi-tier support organization from the moment we hand over the keys.	<b>09</b>



## Technical Capabilities Proven Across 200,000+ Sites

**Full visibility across your entire site, from day one.** Centralized data collection from BESS, solar and battery PCS, meteorological stations, and balance of plant equipment — is all accessible the same day your system goes live. Sub-second polling capability means nothing gets missed.

**Precise control across every operating mode.** 12 real and reactive control modes give your system the flexibility to meet any grid requirement. Day-ahead waypoint scheduling keeps state-of-charge management on plan.

**Robust communication networks.** Redundant network designs and support for industry-standard protocols — DNP 3.0, Modbus TCP/IP, OPC-UA, IEC 61850, and IEC 60870 — ensures your system stays up and stays connected.

**Regulatory reporting that runs itself.** Stem preconfigures automated submissions and compliance management across SGIP, CleanPeaks, and other regional programs. Standardized data formatting and submission protocols mean nothing falls through the cracks, no matter how many sites or markets you're operating in.

# Why Choose Stem

The expertise to deliver your project correctly, and the scale to do it again and again.

## Single Vendor Accountability

One team owns every phase. You'll avoid coordination overhead and eliminate gaps between contractors.

## Regional Support Hubs

Engineering hubs in Americas, EMEA, and APAC ensure support across time zones.

## Factory Pre-Configuration

Pre-built and pre-tested enclosures cut field labor costs and site schedule risk.

## Global Operations

### Americas

Broomfield, CO  
Primary Hub  
40+ Engineers

### EMEA

Berlin, Germany  
10+ Engineers

### APAC

Delhi & Tokyo  
25+ Engineers

## Customer Outcomes Built Into Every Deployment

Faster timelines, controlled costs, and a single point of accountability.



### Accelerate Revenue

Standardized timeline gets you to commercial operation faster, realizing returns sooner.



### Reduce Project Costs

Factory pre-configuration and remote commissioning capabilities minimize field labor expenses.



### Protect Your Investment

Future-proof technology architecture is built to scale with your portfolio.



About Stem, Inc.

**Stem (NYSE: STEM) is a global leader reimagining technology to support the energy transition. We turn complexity into clarity and potential into performance.**

---

Stem helps asset owners, operators, and energy stakeholders unlock the full value of their portfolios by enabling the intelligent development, deployment, and operation of clean energy assets. Stem's integrated software suite, PowerTrack, is the industry-standard and best-in-class platform for asset monitoring and optimization and is backed by expert professional and managed services, all delivered under one roof. Designed to address complex energy challenges seamlessly, our technology transforms raw data into clear, actionable insights, providing the visibility and intelligence needed to drive performance. With projects across 55 countries, customers have trusted Stem for nearly 20 years to maximize the value of their clean energy investments.

Driven by human and artificial intelligence, Stem is unlocking energy intelligence. Learn more at [stem.com](https://stem.com).

**Stem, Inc.**

1400 Post Oak Blvd, STE 560, Houston, TX 77056  
866.303.5668 | [sales@stem.com](mailto:sales@stem.com)

